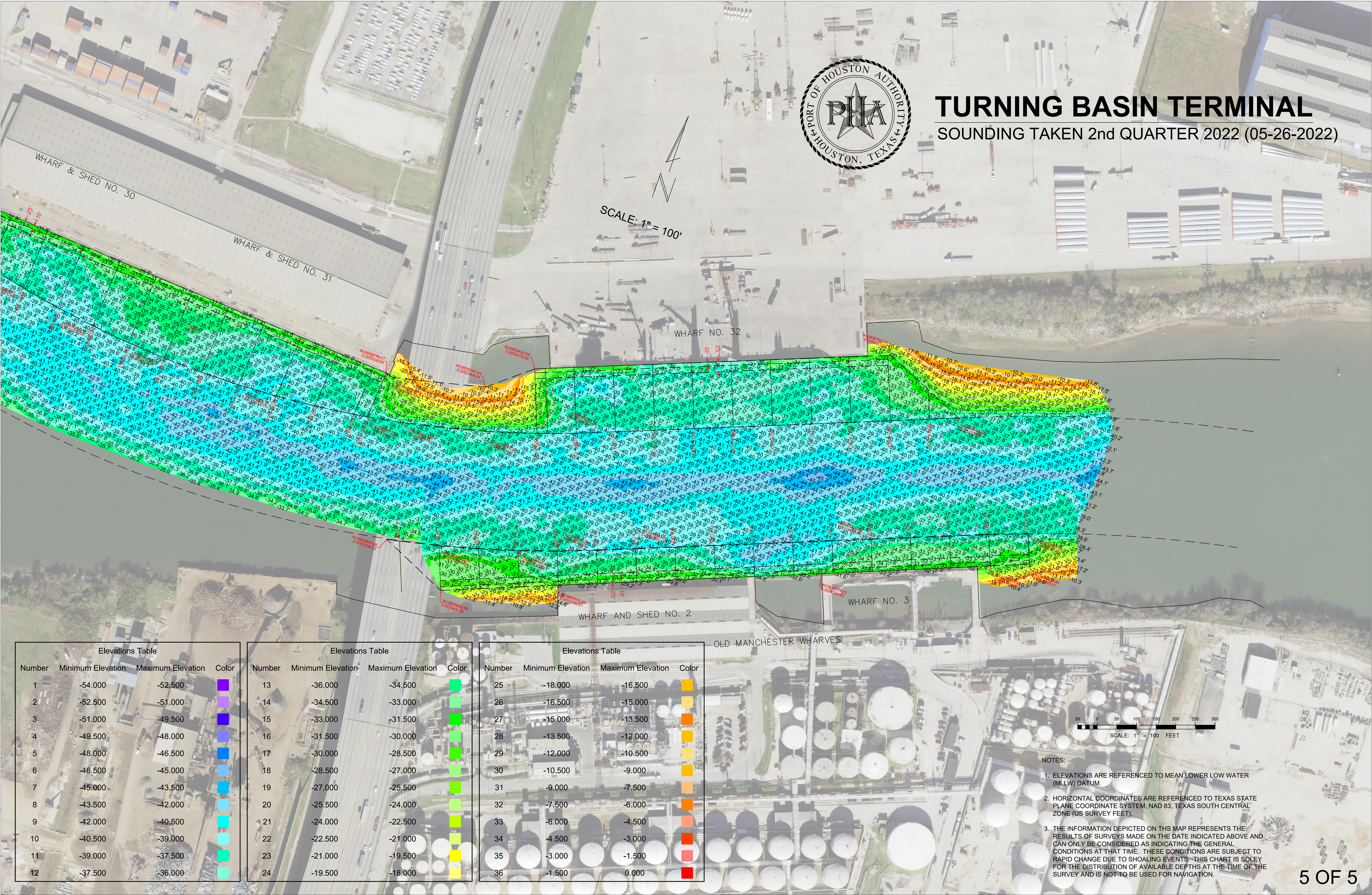


TURNING BASIN TERMINAL

SOUNDING TAKEN 2nd QUARTER 2022 (05-26-2022)

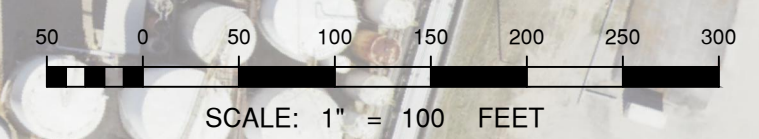
SCALE: 1" = 100'



Number	Minimum Elevation	Maximum Elevation	Color
1	-54.000	-52.500	Purple
2	-52.500	-51.000	Light Purple
3	-51.000	-49.500	Dark Blue
4	-49.500	-48.000	Blue
5	-48.000	-46.500	Light Blue
6	-46.500	-45.000	Very Light Blue
7	-45.000	-43.500	Cyan
8	-43.500	-42.000	Light Cyan
9	-42.000	-40.500	Teal
10	-40.500	-39.000	Light Teal
11	-39.000	-37.500	Green
12	-37.500	-36.000	Light Green

Number	Minimum Elevation	Maximum Elevation	Color
13	-36.000	-34.500	Light Green
14	-34.500	-33.000	Green
15	-33.000	-31.500	Light Green
16	-31.500	-30.000	Green
17	-30.000	-28.500	Light Green
18	-28.500	-27.000	Green
19	-27.000	-25.500	Light Green
20	-25.500	-24.000	Green
21	-24.000	-22.500	Light Green
22	-22.500	-21.000	Green
23	-21.000	-19.500	Light Green
24	-19.500	-18.000	Green

Number	Minimum Elevation	Maximum Elevation	Color
25	-18.000	-16.500	Yellow
26	-16.500	-15.000	Light Yellow
27	-15.000	-13.500	Yellow
28	-13.500	-12.000	Light Yellow
29	-12.000	-10.500	Yellow
30	-10.500	-9.000	Light Yellow
31	-9.000	-7.500	Yellow
32	-7.500	-6.000	Light Yellow
33	-6.000	-4.500	Yellow
34	-4.500	-3.000	Light Yellow
35	-3.000	-1.500	Yellow
36	-1.500	0.000	Red



- NOTES:
- ELEVATIONS ARE REFERENCED TO MEAN LOWER LOW WATER (MLLW) DATUM.
 - HORIZONTAL COORDINATES ARE REFERENCED TO TEXAS STATE PLANE COORDINATE SYSTEM, NAD 83, TEXAS SOUTH CENTRAL ZONE (US SURVEY FEET).
 - THE INFORMATION DEPICTED ON THIS MAP REPRESENTS THE RESULTS OF SURVEYS MADE ON THE DATE INDICATED ABOVE AND CAN ONLY BE CONSIDERED AS INDICATING THE GENERAL CONDITIONS AT THAT TIME. THESE CONDITIONS ARE SUBJECT TO RAPID CHANGE DUE TO SHOALING EVENTS - THIS CHART IS SOLELY FOR THE DISTRIBUTION OF AVAILABLE DEPTHS AT THE TIME OF THE SURVEY AND IS NOT TO BE USED FOR NAVIGATION.