

Property for

# LEASE

Penn City Road (near I-10) | Houston, TX

**Real Estate  
Brokers  
Welcome!**

**± 12.5**

Acres

**± 7.5**

Expandable acres

## FEATURES

### FTZ Status:

Available

### Ship Channel Access:

No

### Rail Accessible:

No

### Fenced:

Yes

### Access:

I-10 East and 1.3 miles  
down Penn City Road

### Lighting:

No

### Stabilized:

Yes

### Use:

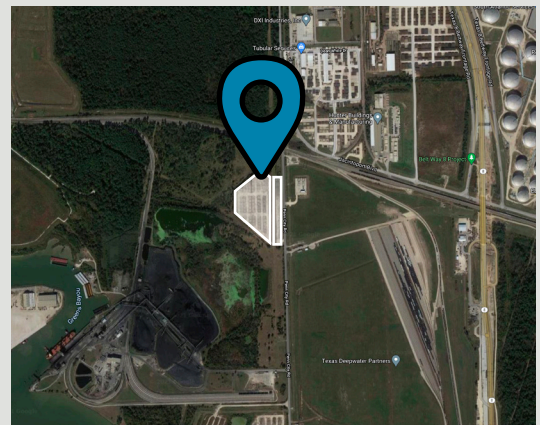
Excellent pipe or steel  
laydown area or general  
heavy cargo

### Monthly Rate:

Gross lease: call for  
rate and showing

## Best site for:

Container, steel or general cargo laydown  
and staging



## DIRECTIONS

From Downtown, take Interstate I-10 going East, and exit 781A. Follow East Freeway service road to Penn City Road. Turn right and proceed down Penn City Road approximately 1.3 miles. Property will be on the right side.

The Port Authority makes no guarantee, warranty or representation about the information contained herein. Any projections, opinions, assumptions or estimates used are for example only and do not represent the current or future performance of the property. You and your advisors should conduct a careful, independent investigation of the property to determine to your satisfaction.



**PORT HOUSTON**<sup>SM</sup>

[porthouston.com/real-estate](http://porthouston.com/real-estate)

For more information on properties and rates, contact us at:

**713-670-2400**

**[realestate@porthouston.com](mailto:realestate@porthouston.com)**