

Property for

LEASE

Penn City Road (near I-10) | Houston, TX

Real Estate
Brokers
Welcome!

± 12.5

Acres

± 7.5

Expandable acres

FEATURES

FTZ Status:
Available

Stabilized:
Yes

**Ship Channel
Access:**
No

Use:
Excellent pipe or
steel laydown area or
general heavy cargo

Rail Accessible:
No

Monthly Rate:
Gross lease: call for
rate and showing

Fenced:
Yes

Access:
I-10 East and 1.3 miles
down Penn City Road

Lighting:
No

Best site for:

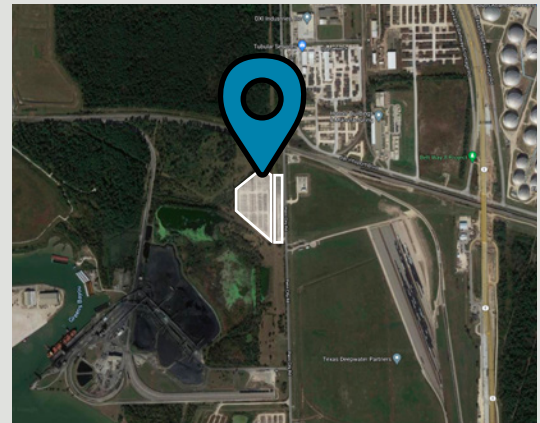
Container, steel or general cargo laydown
and staging



DIRECTIONS

From Downtown, take Interstate I-10 going East, and exit 781A. Follow East Freeway service road to Penn City Road. Turn right and proceed down Penn City Road approximately 1.3 miles. Property will be on the right side.

The Port Authority makes no guarantee, warranty or representation about the information contained herein. Any projections, opinions, assumptions or estimates used are for example only and do not represent the current or future performance of the property. You and your advisors should conduct a careful, independent investigation of the property to determine to your satisfaction.



PORT HOUSTON™

porthouston.com/real-estate

For more information on properties and rates, contact us at:

713-670-2400

realestate@porthouston.com