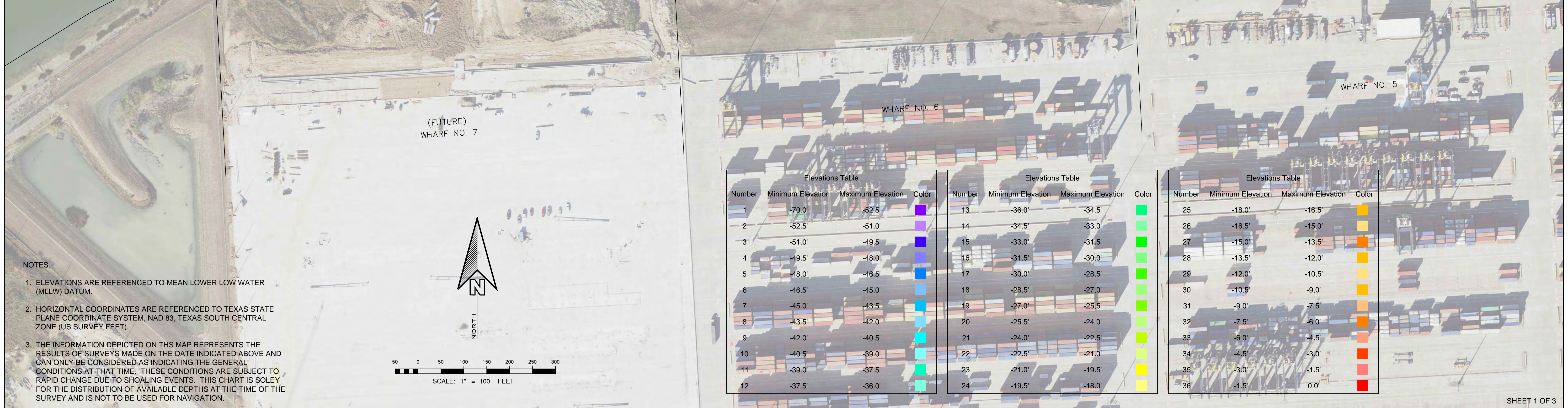
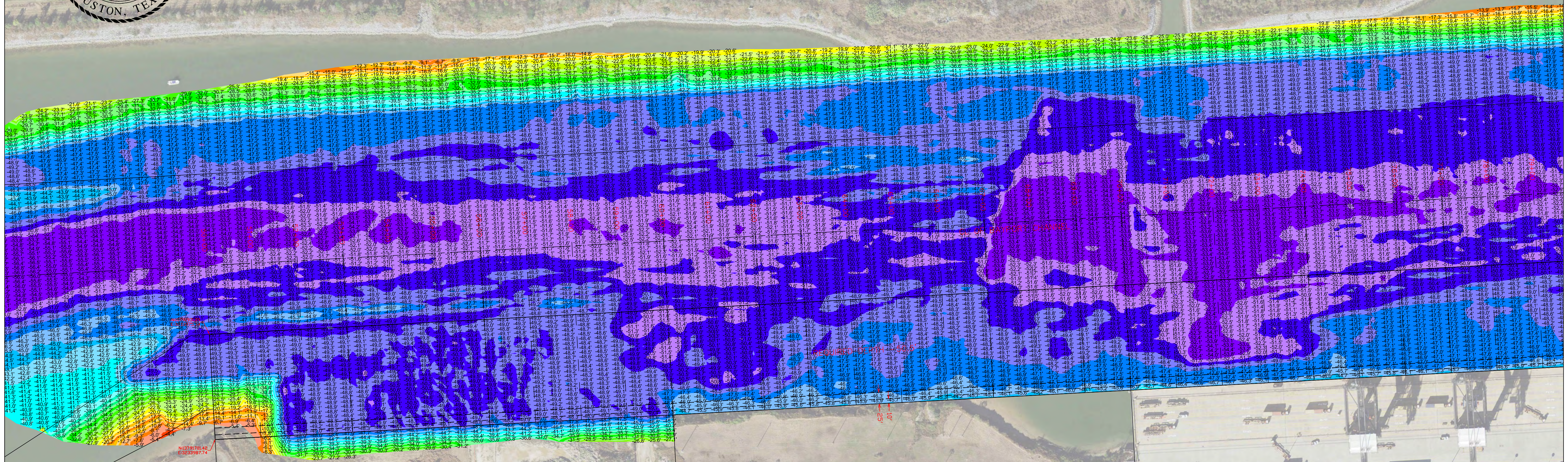




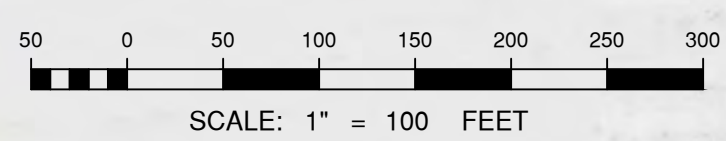
# BAYPORT TERMINAL

## SOUNDING TAKEN 1st QUARTER 2024 (03-05-2024)



NOTES:

- ELEVATIONS ARE REFERENCED TO MEAN LOWER WATER (MLLW) DATUM.
- HORIZONTAL COORDINATES ARE REFERENCED TO TEXAS STATE PLANE COORDINATE SYSTEM, NAD 83, TEXAS SOUTH CENTRAL ZONE (US SURVEY FEET).
- THE INFORMATION DEPICTED ON THIS MAP REPRESENTS THE RESULTS OF SURVEYS MADE ON THE DATE INDICATED ABOVE AND CAN ONLY BE CONSIDERED AS INDICATING THE GENERAL CONDITIONS AT THAT TIME. THESE CONDITIONS ARE SUBJECT TO RAPID CHANGE DUE TO SHOALING EVENTS. THIS CHART IS SOLELY FOR THE DISTRIBUTION OF AVAILABLE DEPTHS AT THE TIME OF THE SURVEY AND IS NOT TO BE USED FOR NAVIGATION.



Elevations Table			
Number	Minimum Elevation	Maximum Elevation	Color
1	-70.0'	-52.5'	Red
2	-52.5'	-51.0'	Orange
3	-51.0'	-49.5'	Yellow
4	-49.5'	-48.0'	Light Green
5	-48.0'	-46.5'	Green
6	-46.5'	-45.0'	Light Blue
7	-45.0'	-43.5'	Blue
8	-43.5'	-42.0'	Dark Blue
9	-42.0'	-40.5'	Very Dark Blue
10	-40.5'	-39.0'	Black
11	-39.0'	-37.5'	Black
12	-37.5'	-36.0'	Black

Elevations Table			
Number	Minimum Elevation	Maximum Elevation	Color
13	-36.0'	-34.5'	Black
14	-34.5'	-33.0'	Black
15	-33.0'	-31.5'	Black
16	-31.5'	-30.0'	Black
17	-30.0'	-28.5'	Black
18	-28.5'	-27.0'	Black
19	-27.0'	-25.5'	Black
20	-25.5'	-24.0'	Black
21	-24.0'	-22.5'	Black
22	-22.5'	-21.0'	Black
23	-21.0'	-19.5'	Black
24	-19.5'	-18.0'	Black

Elevations Table			
Number	Minimum Elevation	Maximum Elevation	Color
25	-18.0'	-16.5'	Black
26	-16.5'	-15.0'	Black
27	-15.0'	-13.5'	Black
28	-13.5'	-12.0'	Black
29	-12.0'	-10.5'	Black
30	-10.5'	-9.0'	Black
31	-9.0'	-7.5'	Black
32	-7.5'	-6.0'	Black
33	-6.0'	-4.5'	Black
34	-4.5'	-3.0'	Black
35	-3.0'	-1.5'	Black
36	-1.5'	0.0'	Black