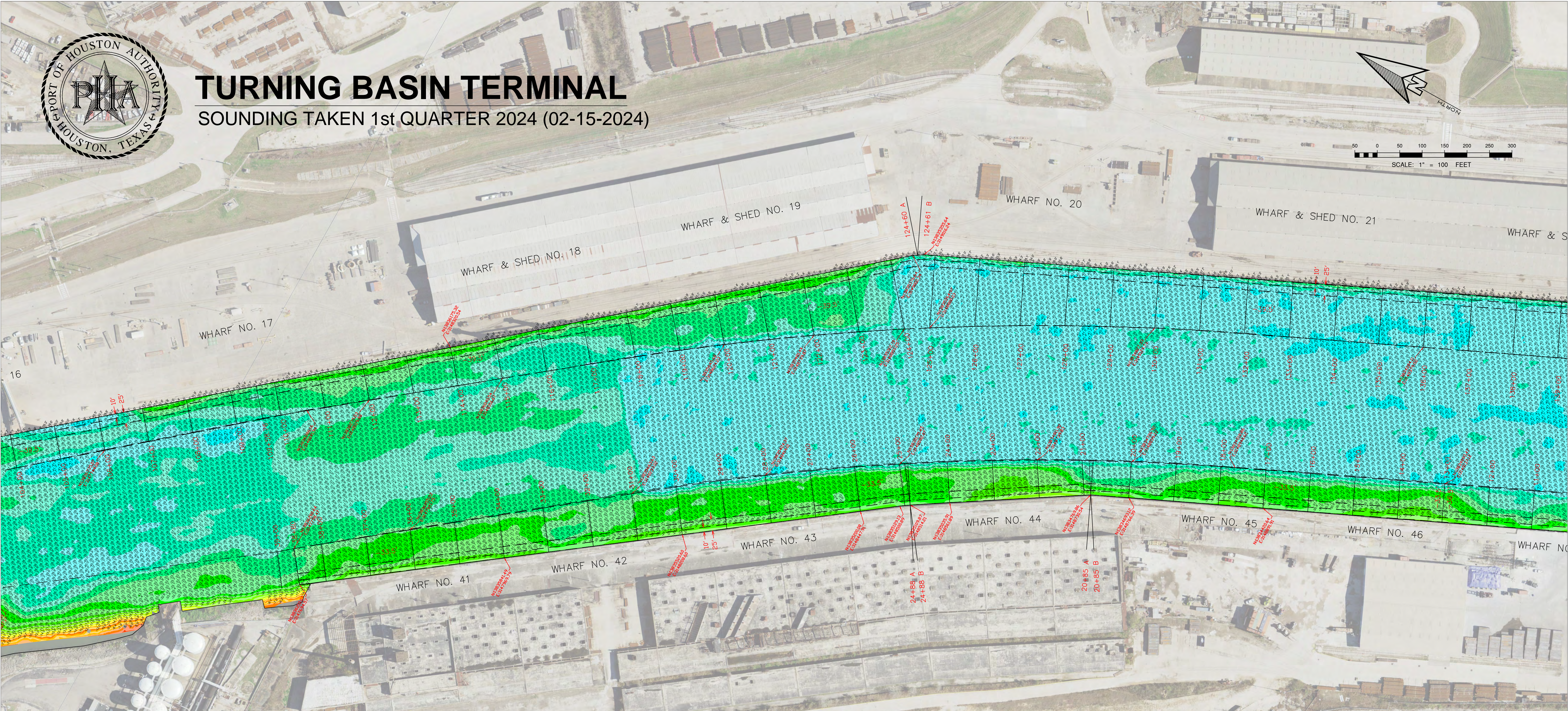
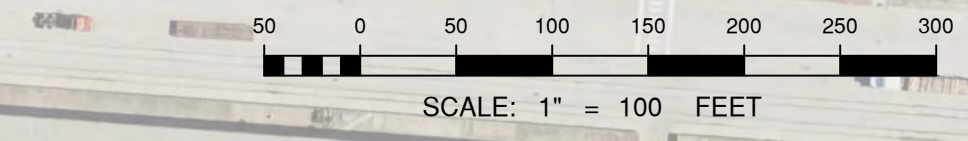
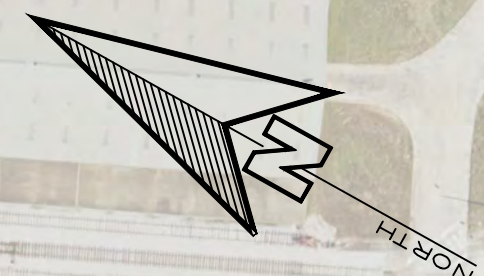




TURNING BASIN TERMINAL

SOUNDING TAKEN 1st QUARTER 2024 (02-15-2024)



- NOTES:
- ELEVATIONS ARE REFERENCED TO MEAN LOWER LOW WATER (MLLW) DATUM.
 - HORIZONTAL COORDINATES ARE REFERENCED TO TEXAS STATE PLANE COORDINATE SYSTEM, NAD 83, TEXAS SOUTH CENTRAL ZONE (US SURVEY FEET).
 - THE INFORMATION DEPICTED ON THIS MAP REPRESENTS THE RESULTS OF SURVEYS MADE ON THE DATE INDICATED ABOVE AND CAN ONLY BE CONSIDERED AS INDICATING THE GENERAL CONDITIONS AT THAT TIME. THESE CONDITIONS ARE SUBJECT TO RAPID CHANGE DUE TO SHOALING EVENTS. THIS CHART IS SOLELY FOR THE DISTRIBUTION OF AVAILABLE DEPTHS AT THE TIME OF THE SURVEY AND IS NOT TO BE USED FOR NAVIGATION.

| Elevations Table | | | |
|------------------|-------------------|-------------------|-----------------|
| Number | Minimum Elevation | Maximum Elevation | Color |
| 1 | -70.0' | -52.5' | Purple |
| 2 | -52.5' | -51.0' | Light Purple |
| 3 | -51.0' | -49.5' | Dark Blue |
| 4 | -49.5' | -48.0' | Blue |
| 5 | -48.0' | -46.5' | Light Blue |
| 6 | -46.5' | -45.0' | Very Light Blue |
| 7 | -45.0' | -43.5' | Cyan |
| 8 | -43.5' | -42.0' | Light Cyan |
| 9 | -42.0' | -40.5' | Very Light Cyan |
| 10 | -40.5' | -39.0' | Teal |
| 11 | -39.0' | -37.5' | Light Teal |
| 12 | -37.5' | -36.0' | Light Green |

| Elevations Table | | | |
|------------------|-------------------|-------------------|-------------|
| Number | Minimum Elevation | Maximum Elevation | Color |
| 13 | -36.0' | -34.5' | Light Green |
| 14 | -34.5' | -33.0' | Green |
| 15 | -33.0' | -31.5' | Light Green |
| 16 | -31.5' | -30.0' | Green |
| 17 | -30.0' | -28.5' | Light Green |
| 18 | -28.5' | -27.0' | Green |
| 19 | -27.0' | -25.5' | Light Green |
| 20 | -25.5' | -24.0' | Green |
| 21 | -24.0' | -22.5' | Light Green |
| 22 | -22.5' | -21.0' | Green |
| 23 | -21.0' | -19.5' | Light Green |
| 24 | -19.5' | -18.0' | Green |

| Elevations Table | | | |
|------------------|-------------------|-------------------|--------------|
| Number | Minimum Elevation | Maximum Elevation | Color |
| 25 | -18.0' | -16.5' | Yellow |
| 26 | -16.5' | -15.0' | Light Yellow |
| 27 | -15.0' | -13.5' | Yellow |
| 28 | -13.5' | -12.0' | Light Yellow |
| 29 | -12.0' | -10.5' | Yellow |
| 30 | -10.5' | -9.0' | Light Yellow |
| 31 | -9.0' | -7.5' | Yellow |
| 32 | -7.5' | -6.0' | Light Yellow |
| 33 | -6.0' | -4.5' | Yellow |
| 34 | -4.5' | -3.0' | Light Yellow |
| 35 | -3.0' | -1.5' | Yellow |
| 36 | -1.5' | 0.0' | Light Yellow |