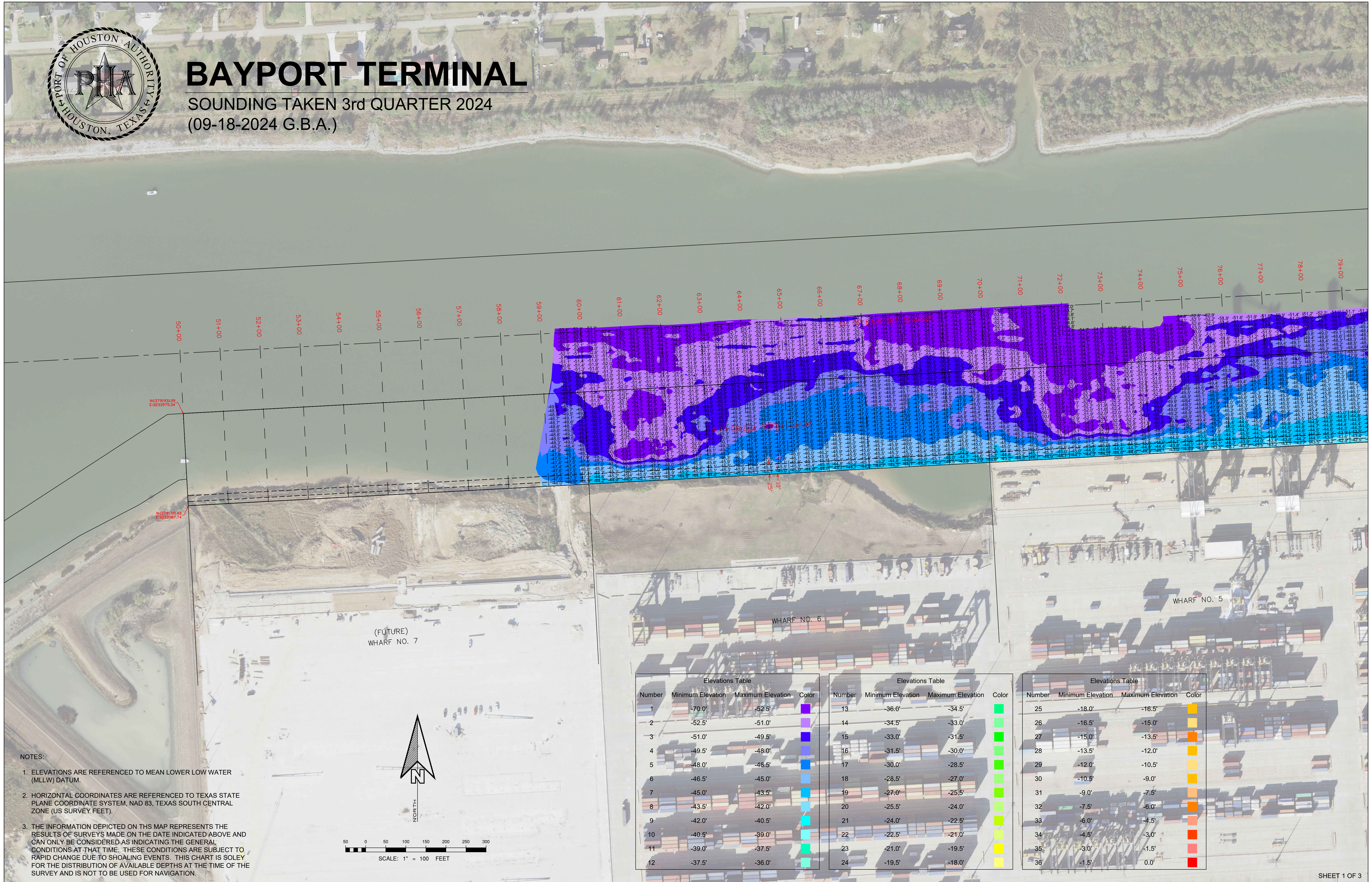




BAYPORT TERMINAL

SOUNDING TAKEN 3rd QUARTER 2024
(09-18-2024 G.B.A.)



M33791931.09
E:0352975.94

M33791701.92
E:0352977.74

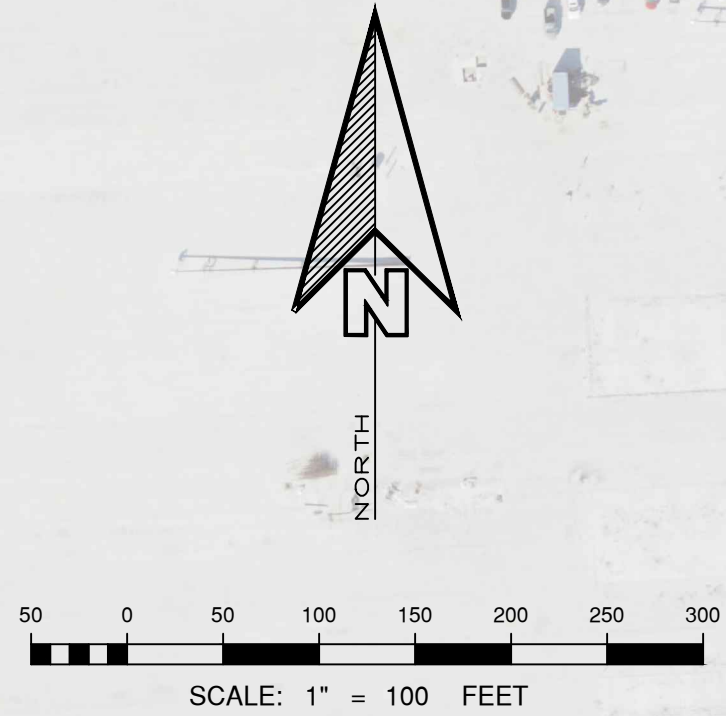
(FUTURE)
WHARF NO. 7

WHARF NO. 6

WHARF NO. 5

NOTES:

- ELEVATIONS ARE REFERENCED TO MEAN LOWER LOW WATER (MLLW) DATUM.
- HORIZONTAL COORDINATES ARE REFERENCED TO TEXAS STATE PLANE COORDINATE SYSTEM, NAD 83, TEXAS SOUTH CENTRAL ZONE (US SURVEY FEET).
- THE INFORMATION DEPICTED ON THIS MAP REPRESENTS THE RESULTS OF SURVEYS MADE ON THE DATE INDICATED ABOVE AND CAN ONLY BE CONSIDERED AS INDICATING THE GENERAL CONDITIONS AT THAT TIME. THESE CONDITIONS ARE SUBJECT TO RAPID CHANGE DUE TO SHOALING EVENTS. THIS CHART IS SOLELY FOR THE DISTRIBUTION OF AVAILABLE DEPTHS AT THE TIME OF THE SURVEY AND IS NOT TO BE USED FOR NAVIGATION.



Elevations Table			
Number	Minimum Elevation	Maximum Elevation	Color
1	-70.0'	-52.5'	Purple
2	-52.5'	-51.0'	Light Purple
3	-51.0'	-49.5'	Blue
4	-49.5'	-48.0'	Light Blue
5	-48.0'	-46.5'	Light Cyan
6	-46.5'	-45.0'	Light Green
7	-45.0'	-43.5'	Light Yellow
8	-43.5'	-42.0'	Yellow
9	-42.0'	-40.5'	Light Orange
10	-40.5'	-39.0'	Orange
11	-39.0'	-37.5'	Red-Orange
12	-37.5'	-36.0'	Red

Elevations Table			
Number	Minimum Elevation	Maximum Elevation	Color
13	-36.0'	-34.5'	Light Green
14	-34.5'	-33.0'	Light Yellow
15	-33.0'	-31.5'	Yellow
16	-31.5'	-30.0'	Light Orange
17	-30.0'	-28.5'	Orange
18	-28.5'	-27.0'	Light Red
19	-27.0'	-25.5'	Red
20	-25.5'	-24.0'	Light Orange
21	-24.0'	-22.5'	Orange
22	-22.5'	-21.0'	Light Red
23	-21.0'	-19.5'	Red
24	-19.5'	-18.0'	Light Red

Elevations Table			
Number	Minimum Elevation	Maximum Elevation	Color
25	-18.0'	-16.5'	Light Orange
26	-16.5'	-15.0'	Orange
27	-15.0'	-13.5'	Light Red
28	-13.5'	-12.0'	Red
29	-12.0'	-10.5'	Light Orange
30	-10.5'	-9.0'	Orange
31	-9.0'	-7.5'	Light Red
32	-7.5'	-6.0'	Red
33	-6.0'	-4.5'	Light Orange
34	-4.5'	-3.0'	Orange
35	-3.0'	-1.5'	Light Red
36	-1.5'	0.0'	Red