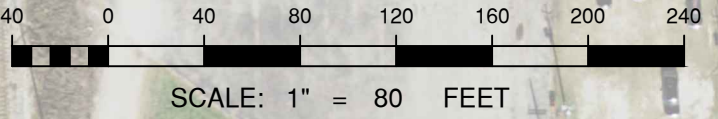




# WOODHOUSE TERMINAL

## SOUNDING TAKEN 3rd QUARTER 2024

### (09-27-2024 G.B.A.)



RO-RO  
N13830479.97 E3162060.76  
N13830471.25 E3162119.21  
N13830473.90 E3162247.59

N13830375.93 E3162059.95

N13829933 E3162070.86

N13829604.54 E3162823.60

DOCK 3

DOCK 2

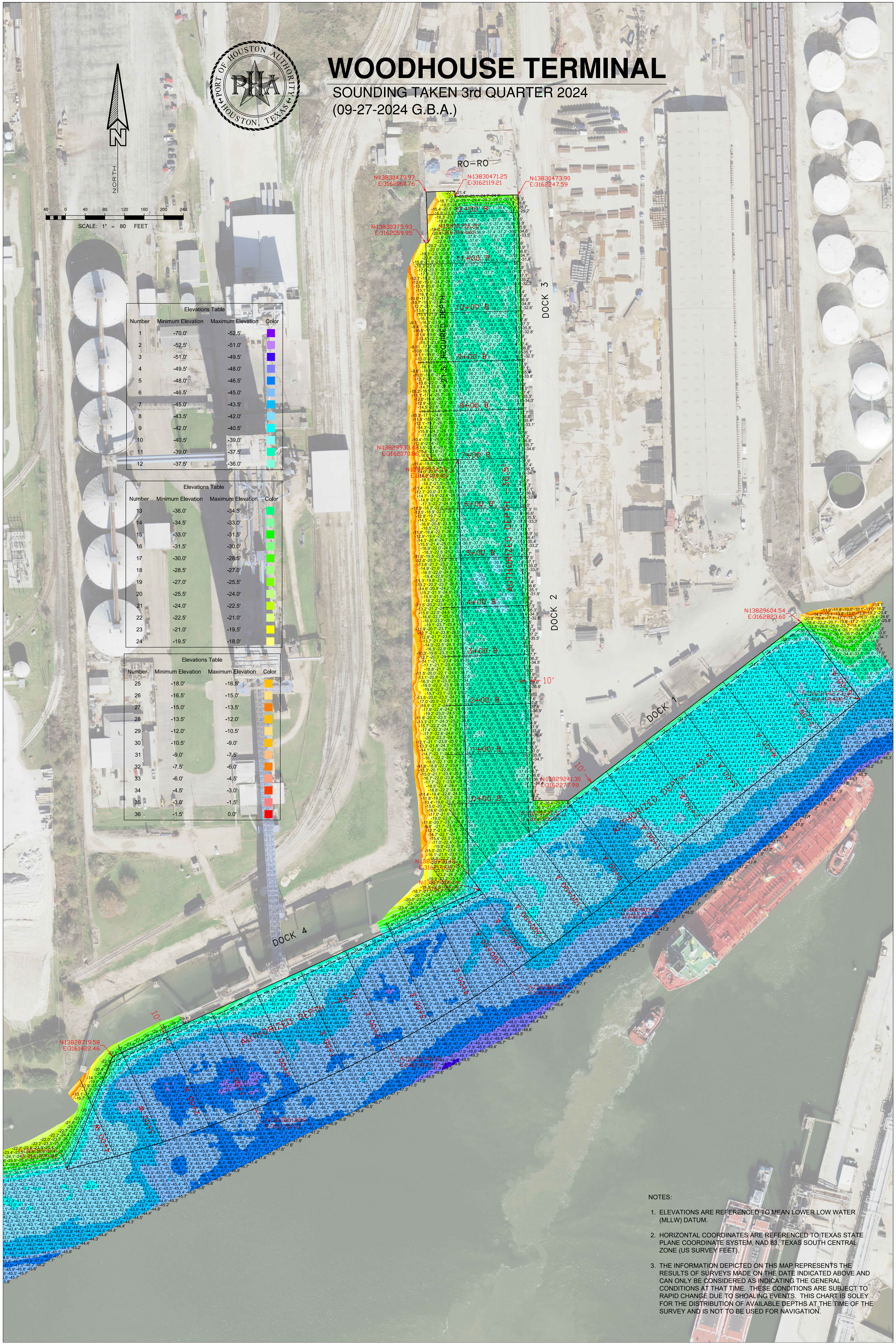
DOCK 1

DOCK 4

Elevations Table			
Number	Minimum Elevation	Maximum Elevation	Color
1	-70.0'	-52.5'	Red
2	-52.5'	-51.0'	Orange
3	-51.0'	-49.5'	Yellow
4	-49.5'	-48.0'	Light Green
5	-48.0'	-46.5'	Green
6	-46.5'	-45.0'	Light Blue
7	-45.0'	-43.5'	Blue
8	-43.5'	-42.0'	Dark Blue
9	-42.0'	-40.5'	Very Dark Blue
10	-40.5'	-39.0'	Black
11	-39.0'	-37.5'	Dark Purple
12	-37.5'	-36.0'	Light Purple

Elevations Table			
Number	Minimum Elevation	Maximum Elevation	Color
13	-36.0'	-34.5'	Light Green
14	-34.5'	-33.0'	Green
15	-33.0'	-31.5'	Light Blue
16	-31.5'	-30.0'	Blue
17	-30.0'	-28.5'	Dark Blue
18	-28.5'	-27.0'	Very Dark Blue
19	-27.0'	-25.5'	Black
20	-25.5'	-24.0'	Dark Purple
21	-24.0'	-22.5'	Light Purple
22	-22.5'	-21.0'	Light Green
23	-21.0'	-19.5'	Green
24	-19.5'	-18.0'	Light Blue

Elevations Table			
Number	Minimum Elevation	Maximum Elevation	Color
25	-18.0'	-16.5'	Light Green
26	-16.5'	-15.0'	Green
27	-15.0'	-13.5'	Light Blue
28	-13.5'	-12.0'	Blue
29	-12.0'	-10.5'	Dark Blue
30	-10.5'	-9.0'	Very Dark Blue
31	-9.0'	-7.5'	Black
32	-7.5'	-6.0'	Dark Purple
33	-6.0'	-4.5'	Light Purple
34	-4.5'	-3.0'	Light Green
35	-3.0'	-1.5'	Green
36	-1.5'	0.0'	Light Blue



#### NOTES:

- ELEVATIONS ARE REFERENCED TO MEAN LOWER LOW WATER (MLLW) DATUM.
- HORIZONTAL COORDINATES ARE REFERENCED TO TEXAS STATE PLANE COORDINATE SYSTEM, NAD 83, TEXAS SOUTH CENTRAL ZONE (US SURVEY FEET).
- THE INFORMATION DEPICTED ON THIS MAP REPRESENTS THE RESULTS OF SURVEYS MADE ON THE DATE INDICATED ABOVE AND CAN ONLY BE CONSIDERED AS INDICATING THE GENERAL CONDITIONS AT THAT TIME. THESE CONDITIONS ARE SUBJECT TO RAPID CHANGE DUE TO SHOALING EVENTS. THIS CHART IS SOLELY FOR THE DISTRIBUTION OF AVAILABLE DEPTHS AT THE TIME OF THE SURVEY AND IS NOT TO BE USED FOR NAVIGATION.