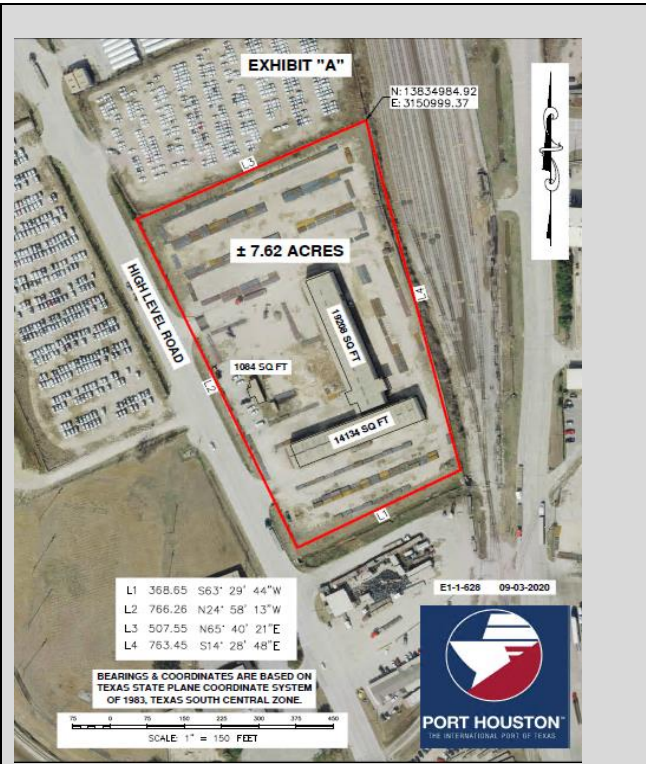
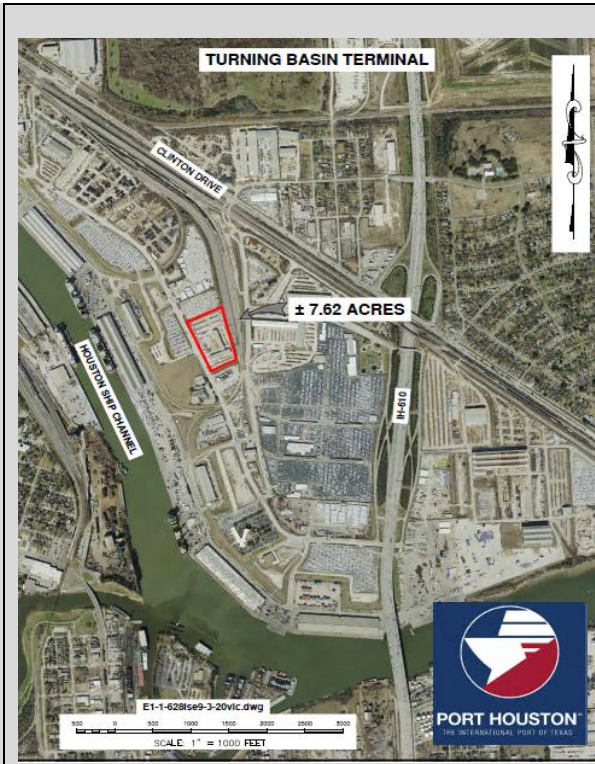


FOR LEASE

7.62 +/- Acres – Ship Channel General Cargo Yard North Turning Basin – Houston, Texas



Features

Size: 7.62 +/- Acres & **33,342 SF** transit warehouses

Fenced: Yes

Foreign Trade Zone: Yes

TWIC: Not Necessary for Access

Ship Channel Access: Yes

Property Location: 8402 Clinton Houston, TX 77029

Parking Area: Yes

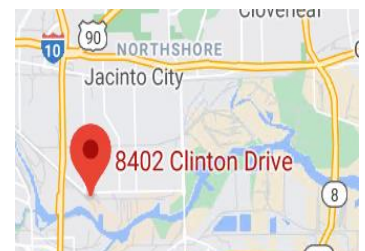
Lighting: Yes

Stabilized: Yes

Accessible to Wharfs: Yes

Wharf Channel Depth: 37.5 Ft +/-

Access: Port Security Entrance – Main Gate



Directions

From I-45 South, take 610 North to the Port of Houston Main Entrance, Exit 29. From I-10 East, take 610 South to the Port of Houston Main Entrance, Exit 29. Valid ID Required

For more info contact Port Houston Real Estate:

Call Jim @ 713-670-2689 or email realestateinfo@porthouston.com



PORT HOUSTON™
THE INTERNATIONAL PORT OF TEXAS

The Port Authority makes no guarantee, warranty or representation about the information contained herein. Any projections, opinions, assumptions or estimates used are for example only and do not represent the current or future performance of the property. You and your advisors should conduct a careful, independent investigation of the property to determine to your satisfaction.